

# Lifetime Waterproofing, Acoustic & Crack Isolation Solutions

---



Completely eliminate all risk  
when waterproofing with  
**Strataflex®**



#### Guaranteed for life solutions against:

- Failed waterproofing
- Efflorescence
- Concrete cancer
- Cracking due to lateral substrate movement

#### Perfect for:

- All internal and external wet areas
- Podiums
- Balconies
- Common areas
- Heated floors

#### Bonds and maintains performance on all substrates:

- Poured, pre-stressed, post-tensioned, pre-cast concrete
- Cement sheet, screeds, plasterboard
- Structural & marine ply, hardwood
- Existing porcelain or ceramic tile, stone, terrazzo, metal & floors damaged by structural movement and shrinkage

# Strataflex® Waterproofing Membrane

**Strataflex®** is a 1mm high-strength, self-adhering, self-healing, sheet-applied membrane that offers waterproofing and crack isolation protection to ensure the long-term integrity of the substrate. It features a double-stick lap joint that creates a watertight seal without requiring heat or toxic chemicals.



- Lifetime warranty
- Rigorously tested and compliant to all applicable Australian standards
- Protects against efflorescence
- Quick drying - flood test within 24 hours
- 10mm lateral movement crack protection
- Suitable for exterior and interior applications

- Peel and stick, tile over instantly!
- Eliminates control/cold joints entirely
- 50mm lap joints create an impenetrable watertight seal
- Self healing
- Zero VOCs
- Ceramic tile underlay not required
- Compatible with under-floor heating systems
- Electrical resistance to 500V



The only **all-in-one** solution to acoustic, waterproofing & crack isolation requirements with **Super SAM®**



**Guaranteed for life solutions against:**

- IIC/Noise transfer issues
- Failed waterproofing
- Efflorescence
- Concrete cancer
- Cracking due to lateral substrate movement

**Perfect for:**

- Areas requiring acoustic performance
- All internal and external wet areas
- Podiums
- Balconies
- Access Floors
- Common areas
- Heated floors

**Bonds and maintains performance on all substrates:**

- Poured, pre-stressed, post-tensioned, pre-cast concrete
- Cement sheet, screeds, plasterboard
- Structural & marine ply, hardwood
- Existing porcelain or ceramic tile, stone, terrazzo, metal & floors damaged by structural movement and shrinkage

# Super SAM® All-in-one Membrane

**Super SAM®** is a premium 3.2mm self-adhering, self-healing, sheet-applied acoustic membrane designed for use under floor surfaces that require impact and audible sound reduction



- Lifetime warranty
- IIC Testing to ISO717.2 (BCA) - Complies to  $L_{nw} + C1 > 62\text{DB}$
- 10mm lateral movement crack protection
- Suitable for exterior & interior applications
- Quick drying, flood test within 24 hours.
- Peel & stick, tile over instantly!

- Eliminates control/cold joints entirely. Full floor soft joint coverage. Seamless finishes!
- Rigorously tested and compliant to all applicable Australian standards
- Zero VOCs
- Ceramic tile underlay not required
- Compatible with under-floor heating systems
- Electrical resistance to 500V





No more reflective cracking.  
Seamless, Crack Free floors for  
life. Only with **ECB®** Crack  
Isolation Membrane.



**Lifetime protection against ALL lateral  
substrate movement up to 10mm per  
lineal meter.**

**Perfect for:**

- Shopping centres
- Airports
- Hospitals
- Access floors
- Common areas
- Heated floors

**Bonds and maintains performance on all  
substrates:**

- Poured, pre-stressed, post-tensioned, pre-cast concrete
- Cement sheet, screeds, plasterboard
- Structural & marine ply, hardwood
- Existing porcelain or ceramic tile, stone, terrazzo, metal & floors damaged by structural movement and shrinkage

# ECB® Crack Isolation Membrane

**ECB®** is a 1mm self-adhering, self-healing, sheet-applied membrane designed for use under floor surfaces that require protection from structural movement. ECB bonds permanently to the substrate while remaining flexible enough to protect against substrate movement, providing up to 10mm lateral movement per linear metre.

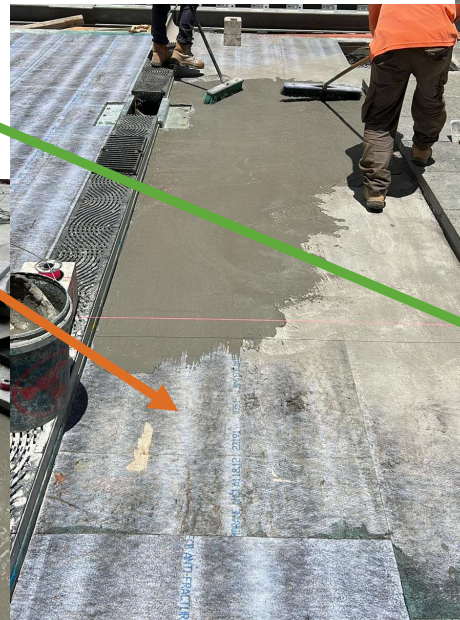
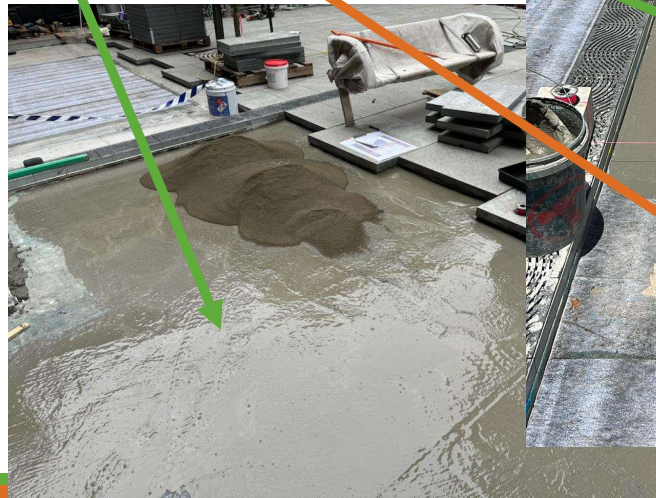
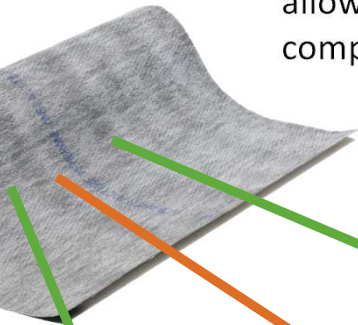


- 10mm lateral movement crack protection
- Lifetime warranty
- Suitable for exterior and interior applications
- Peel & stick, tile over instantly!
- Eliminates control/cold joints entirely. Full floor soft joint coverage. Seamless finishes!

- Rigorously tested and compliant to all applicable Australian standards
- Zero VOCs
- Ceramic tile underlay not required
- Compatible with under-floor heating systems
- Electrical resistance to 500V



Our **ECB®** Crack Isolation sheet membrane is extremely versatile, allowing for installations above **or** below screeds and/or levelling compounds.

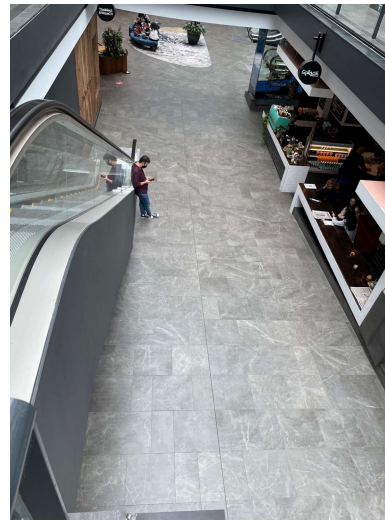


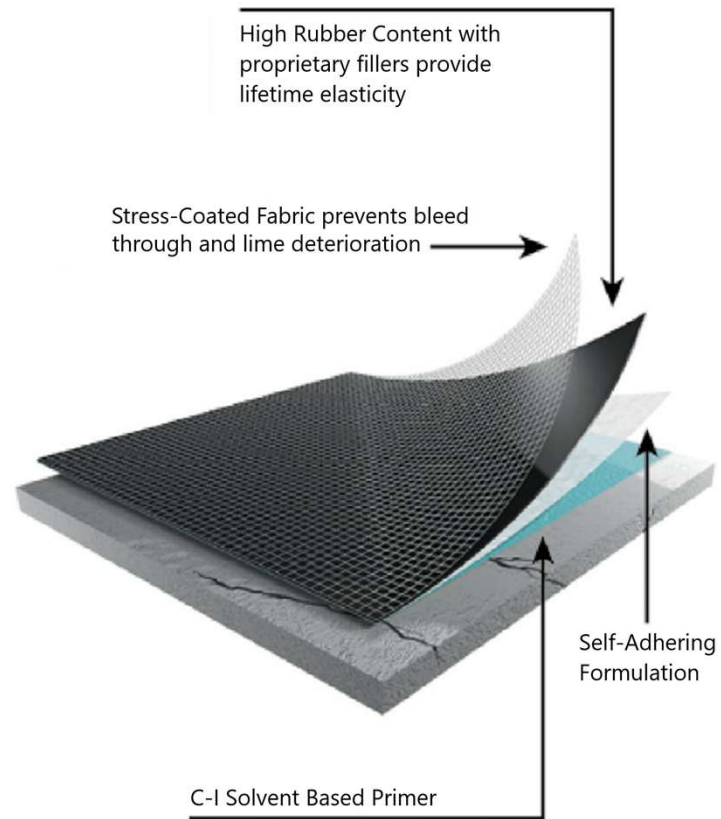


**All Crack Isolation sheet membranes can be installed ‘Tile-over-tile’.**

Our membrane is laid directly to the existing flooring finish, over all cracks and existing joints.

A fantastic cost and time saving solution for any waterproofing, acoustic & crack isolation requirement, guaranteed for life.





## Sheet and Liquid Membrane Compliance to:

### Australian Standard AS4654.1 – 2012

Waterproofing membranes for external above-ground use

Crack Isolation are the current leaders in this testing. Our complete product range of membrane systems including liquid applied membranes have been tested and comply with Australian Standard AS4654.1 – 2012.



- ✓ Crack Isolation
- ✓ Waterproofing
- ✓ Acoustic
- ✓ Liquid Waterproofing

## Key testing & compliance highlights

### AS4858 (2004) – NATA #256-2 10/11/2023

- Durability – Water Immersion (56 days)
  - Elongation to break = 952% (Class III)

### AS4654.1 (2012) – NATA #256-4 10/11/2023

- Bond strength (ASTMC 794) = 45.97 newtons
- Field Seam Strength (ATSM 005) = 32.67 newtons per 25mm<sup>2</sup>

### AS3358.1 – EXCELPLAS Polymer Testing #12813 26/05/2023

- Mass Water Absorption = 0.138%

ANSI A118.12 System Crack Resistance = 10mm per L/Mtr

# Impact Noise Testing

Testing was completed by **Marshall Day Acoustics (MDA)** in accordance with **AS/NZS ISO 140-7:2006** *Field Measurements of impact sound insulation of floors.*

Testing parameters were as follows:

- 14mm thick timber floor boards
- **3.2mm thick “Super SAM” acoustic membrane underlay**
- 180mm concrete slab
- 200mm ceiling void, no insulation
- 10mm plasterboard ceiling



Source Room	Receiving Room	Test Result (L'nTw)
Apartment 716 Living Room Location 1	Apartment 616 Living Room Location 1	<b>47</b>
Apartment 716 Living Room Location 2	Apartment 616 Living Room Location 2	<b>49</b>
Apartment 716 Living Room Location 3	Apartment 616 Living Room Location 3	<b>48</b>
Apartment 716 Kitchen Area Location 4	Apartment 616 Kitchen Area Location 4	<b>47</b>